

BUCKO TRANSITION (BUCKO.FRDMM2):

FRDMM TWO ARRIVAL (FRDMM.FRDMM2) 13178

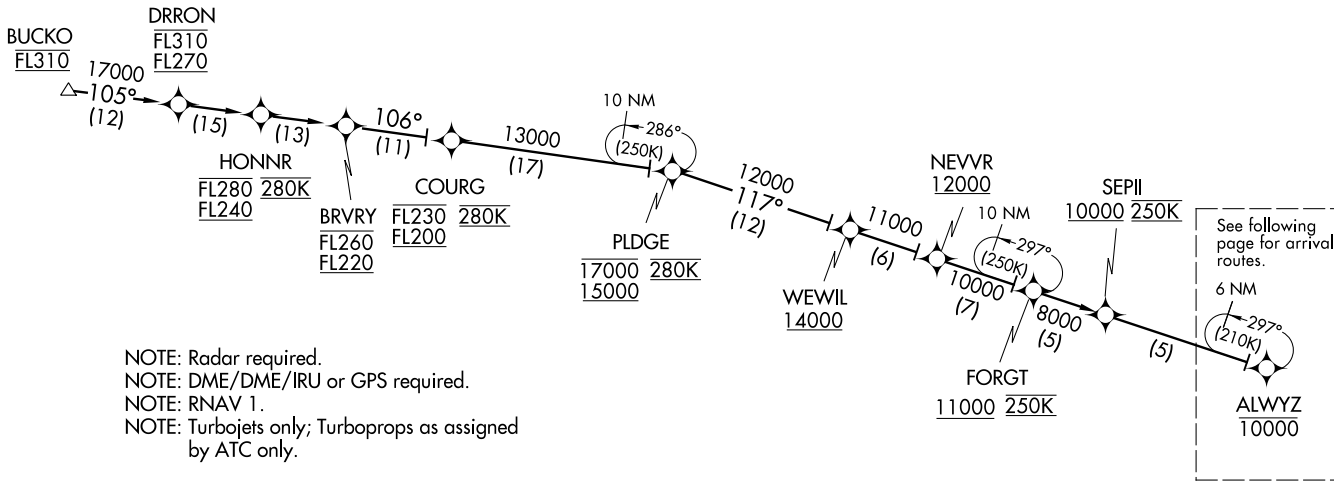
FRDMM TWO ARRIVAL (RNAV) Transition Routes

WASHINGTON, DC

POTOMAC APP CON
118.67 323.175
RONALD REAGAN WASHINGTON
NATIONAL ATIS 132.65
JOINT BASE ANDREWS ATIS
113.1 251.05
DAVISON AAF ATIS
128.175 230.0



MORGANTOWN
MGW



NOTE: Radar required.
NOTE: DME/DME/IRU or GPS required.
NOTE: RNAV 1.
NOTE: Turbojets only; Turboprops as assigned by ATC only.

See following page for arrival routes.
6 NM
ALWYZ 10000

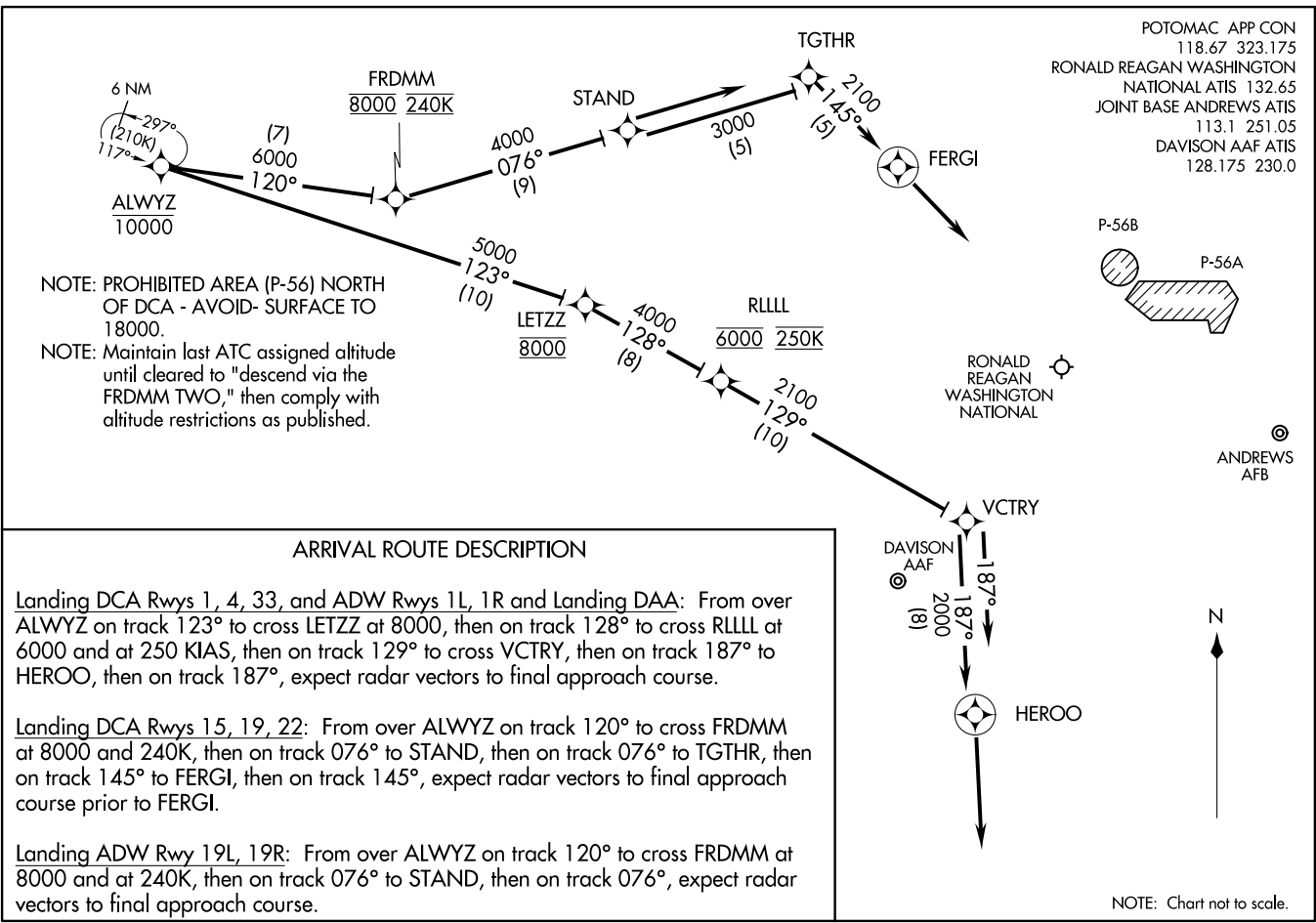
(Continued on next page)

NOTE: Chart not to scale.

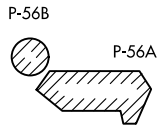
FRDMM TWO ARRIVAL (RNAV) Transition Routes

WASHINGTON, DC

ST-443 (FAA)



POTOMAC APP CON
118.67 323.175
RONALD REAGAN WASHINGTON
NATIONAL ATIS 132.65
JOINT BASE ANDREWS ATIS
113.1 251.05
DAVISON AAF ATIS
128.175 230.0



NOTE: PROHIBITED AREA (P-56) NORTH OF DCA - AVOID- SURFACE TO 18000.
NOTE: Maintain last ATC assigned altitude until cleared to "descend via the FRDMM TWO," then comply with altitude restrictions as published.

ARRIVAL ROUTE DESCRIPTION

Landing DCA Rwy 1, 4, 33, and ADW Rwy 1L, 1R and Landing DAA: From over ALWYZ on track 123° to cross LETZZ at 8000, then on track 128° to cross RLLLL at 6000 and at 250 KIAS, then on track 129° to cross VCTRY, then on track 187° to HEROO, then on track 187°, expect radar vectors to final approach course.

Landing DCA Rwy 15, 19, 22: From over ALWYZ on track 120° to cross FRDMM at 8000 and 240K, then on track 076° to STAND, then on track 076° to TGTHR, then on track 145° to FERGI, then on track 145°, expect radar vectors to final approach course prior to FERGI.

Landing ADW Rwy 19L, 19R: From over ALWYZ on track 120° to cross FRDMM at 8000 and at 240K, then on track 076° to STAND, then on track 076°, expect radar vectors to final approach course.

NOTE: Chart not to scale.